

Log Washers



ENGINEERED PRODUCTS

Description

Trio Log Washers are ideal for scrubbing difficult materials. Tough insoluble clays, conglomerates and soft stone, and certain cemented aggregates are too difficult to clean properly in normal screw machines. The log washer thoroughly scours, breaks down, and cleans the toughest materials.



Trio log washers use the same outstanding features found in our fine and course washers — features such as heavy duty conveying paddles, a rising column of water, and construction features such as heavy duty tubs, oversize bearings and gears. Heavy duty, replaceable shoes provide a long operating life and protect the shaft and tips from long term wear and tear.



Each cast shoe has a corrugated surface to promote the most severe scrubbing action. Tubular log shafts are also designed to be considerably stronger than competing rectangular shafts used by other vendors. The lower end is bolted to a fully machined stub shaft, while the upper end is mounted through a flexible coupling to the output shaft of the heavy duty gearbox. The Trio compound drive divides the operating load over an optimal combination of helical and spur gears, each oversized to ensure maximum operating life.



Operating Principles

Log washer paddles subject the material to continuous grinding and abrading. The units' rising water current facilitates the removal of foreign matter, while adjustable water discharge gates are provided on both sides of the lower end of the tubs.



Input water is controlled by a valve, while discharge water flow is controlled by overflow gates. Ordinarily, log washers are installed at an 8° angle, though there are times that an operator may choose to increase or decrease that angle depending on the particular application requirements.

Applications

Gravel

Crushed Stone

Mixed Clay Material

Mixed Debris

Mud

Environmental

Models/Sizes

36" x 30'

36" x 35'

44" x 30'

44" x 35'

Other Considerations

One Year Warranty

Quick Deliveries

Off-the-shelf parts

Nationwide distribution

Superior Quality

Low Price Guarantee

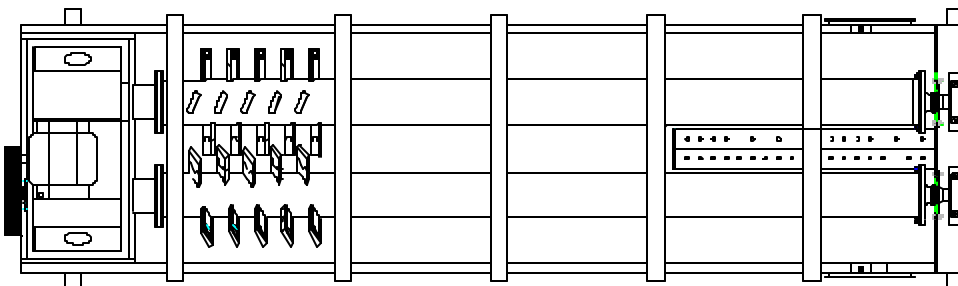
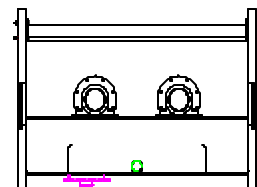
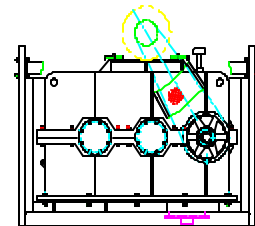
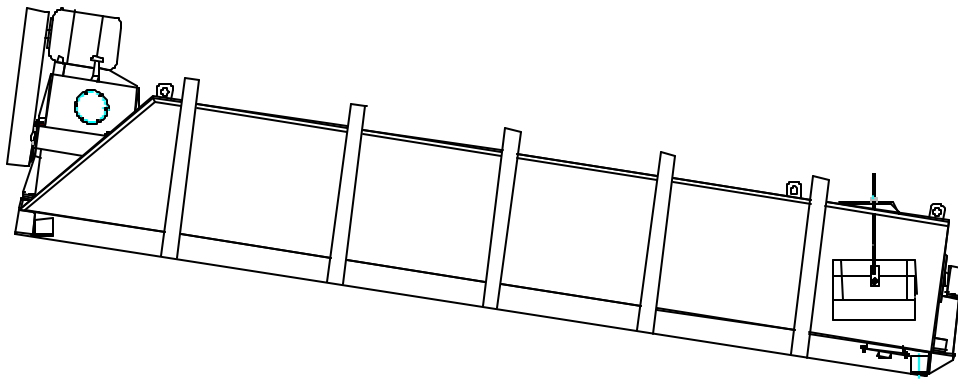
Cornerstone Equipment, Inc.
 13037 Ottawa Drive Savage, MN 55378-1673
 Tel: 952.894.4550 Fax: 952.894.1187
www.crushersales.com g.mcnevin@mchsi.com

Log Washers



	36" x 30'	36" x 35'	44" x 30'	44" x 35'
Capacity (TPH)	50 to 125	50 to 125	75 to 175	75 to 175
Maximum Material Size	3"	3"	4"	4"
HP (Electric)	100 to 150	150	150 to 200	200
Water (GPM @ 25 PSI)	50-500	50-500	75-750	75-750
Max Screw Speed (RPM)	32	32	26	26
Weight	40,000	50,000	60,000	74,000

NOTE: Designs & specifications subject to periodic change without notice.



Cornerstone Equipment, Inc.
 13037 Ottawa Drive Savage, MN 55378-1673
 Tel: 952.894.4550 Fax: 952.894.1187
www.crushersales.com g.mcnevin@mchsi.com