

Vibrating Grizzly Feeders



Trio's Heavy Duty Vibrating Grizzly Feeders have been designed with more than twenty-five years of operating knowledge of vibrating equipment.



46" x 16' Vibrating Feeder After Assembly

Manufactured in a modern facility under the direction of an experienced engineering staff, these units are built for professional quarry and recycling operations. The feeders are available in seven standard lengths and widths and a variety of custom sizes.



The amplitude and motion come from large, twin shaft eccentric heads that utilize extra large bearing assemblies designed to ensure long operating life and maintenance ease. The feeders are ideal for removing oversize rock and ore from feed material before primary crushing equipment. They are also well suited for stand alone operation in scalping and screening applications.

The feeders are available in single or stepped deck configurations, in lengths ranging from 10' to 24', and widths ranging from 40" to 58".

Specifications

Spherical roller bearings	Bolt-on abrasion resistant liners
Welded, stress-relieved steel box	Bolted vibrator assembly
Eccentric counter-rotating timed vibrator shafts	Timing gear adjustment for variable feeder throw
Outboard front spring mountings	Removable, bolted grizzly section
Pivoting motor base	Fabricated, tapered grizzly bars
Oil sight gauge	Welded spring supports

Applications

- Primary Hard Rock Crushing*
- Mixed Demolition Debris*
- Crushed or Broken Concrete*
- Surge Feeds*
- River Rock*
- Asphalt*

Premium Features

- Egg-Crate Pan Support Structure*
- Individual Bearing Cartridges*
- Large, Spherical Greased Bearings*
- Cast or Fabricated Grizzly Bars*

Models/Sizes

40x10

40x12

40x16

46x16

46x20

52x20

52x24

58x22

Other Considerations

- Low Price Guarantee*
- Minimal Lead Times*
- Off-the-Shelf Parts*
- Nationwide Distribution*
- One Year Warranty*

Cornerstone Equipment, Inc.

13037 Ottawa Drive Savage, MN 55378-1673

Tel: 952-894-4550 Fax: 952-894-1187

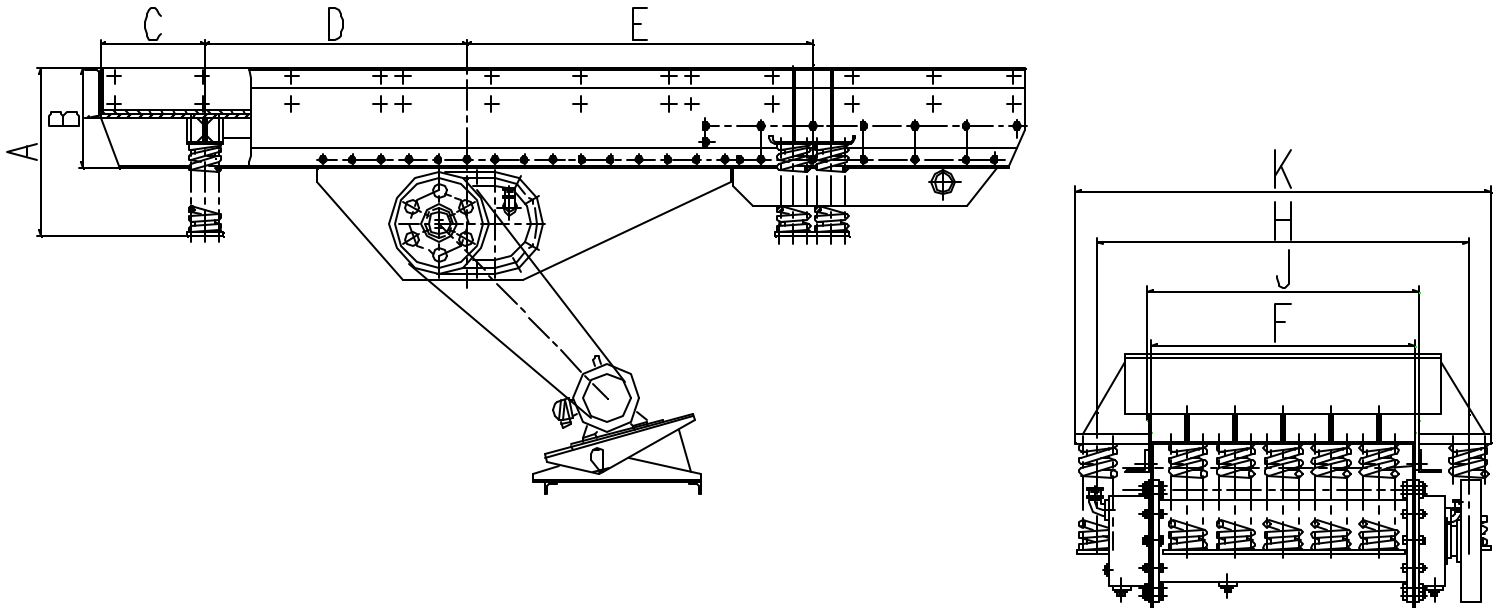
www.crushersales.com g.mcnevin@mchsi.com

Vibrating Grizzly Feeders



Size (mm)	Bearing Size	Weight lbs	Power HP (KW)	Operating Speed (RPM)	Production Capacity (TPH)	Maximum Feed Size
40" x 12' (1016 x 3660)	90 mm	8,350	20 (15)	500 to 800	150 to 350	24"
40" x 16' (1016 x 4877)	90 mm	10,300	25 (20)	500 to 800	200 to 600	24"
46" x 16' (1168 x 4877)	90 mm	11,500	25 (20)	500 to 800	200 to 600	24"
46" x 20' (1168 x 6096)	90 mm	13,000	30 (22)	500 to 800	250 to 750	24"
52" x 20' (1320 x 6096)	110 mm	18,500	40 (30)	500 to 800	300 to 750	36"
52" x 24' (1320 x 7315)	130 mm	21,800	50 (37)	500 to 800	350 to 750	36"
58" x 20' (1626 x 7315)	130 mm	25,000	60 (45)	500 to 800	400 to 800	42"

NOTE: Feeder capacity varies with installed slope of machine and feed hopper configuration.



Size (mm)	A	B	C	D	E	F	H	J	K
40" x 12'	33	20	20	32	63	39	60	40	59
40" x 16'	33	20	21	54	72	39	60	40	68
46" x 16'	33	20	21	54	72	45	64	46	72
46" x 20' (Step)	42	28	21	61	107	45	64	46	72
52" x 20'	43	28	20	61	107	51	71	52	79
52" x 20' (Step)	43	28	20	61	107	51	71	52	79
52" x 24' (Step)	43	28	20	66	117	51	71	52	79
58" x 20'									
Larger Sizes Available									

Cornerstone Equipment, Inc.
 13037 Ottawa Drive Savage, MN 55378-1673
 Tel: 952-894-4550 Fax: 952-894-1187
www.crushersales.com g.mcnevin@mchsi.com